



**MIXX**

tapware & accessories

**ALOE  
COLLECTION**



*the stylish choice*

# FEATURES AND BENEFITS



## 20 YEAR WARRANTY

We offer a 20 year replacement/5 year parts and labour warranty on all of our mixers and ceramic disc tapware.

## ELECTROPLATED FINISHES

At MIXX, we offer our tapware, showers and accessories in a variety of electroplated finishes. This ensures durability and longevity.

## CERAMIC DISC CARTRIDGES

MIXX Tapware uses high quality ceramic disc cartridges and ceramic disc spindles. Also includes an energy efficient cold start cartridge in most products.

## 1500KPA PRESSURE RATING

MIXX Tapware offer a 1500kPa pressure rating on all of our mixers and tapware.

## DEDICATED DESIGN TEAM

Our team of local and international designers work to create high end tapware collections, from the bold and exciting to the classic and understated.

## PEX STAINLESS STEEL MIXER TAILS

All MIXX Tapware comes with PEX (cross-linked polyethylene) stainless steel mixer tails that are burst-proof, and improve longevity.



Chrome

Matt Black

Gunmetal

Brushed Nickel

*the stylish choice*

# COLD START CARTRIDGES

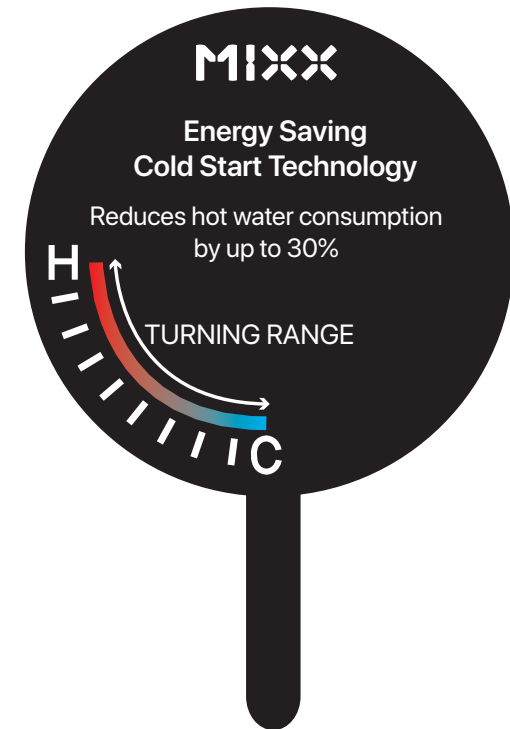
## The next step in energy efficient tapware has arrived.

Research has shown that the majority of the time, a mixer handle is turned on in the centre position and is returned to the centre after use. This leads to a standard mixer cartridge using hot water even when only cold water is required.

Our cold start cartridge locates full cold in the centre of the handle, meaning that users will physically need to turn the handle in order to access warm or hot water.

As most users will turn the mixer on with the handle in the centre position, this will reduce the amount of unnecessary hot water used, and in turn will reduce energy consumption.

Note: cold start cartridges are not used in shower mixers as showers primarily use warm or hot water.



*the stylish choice*



**MIXX**  
tapware & accessories

**ALOE**

# SHOWER DIVERTER MIXERS



**CHROME**

11SL974C



**MATT  
BLACK**

11SL974M



**BRUSHED  
NICKEL**

11SL974B



**GUN  
METAL**

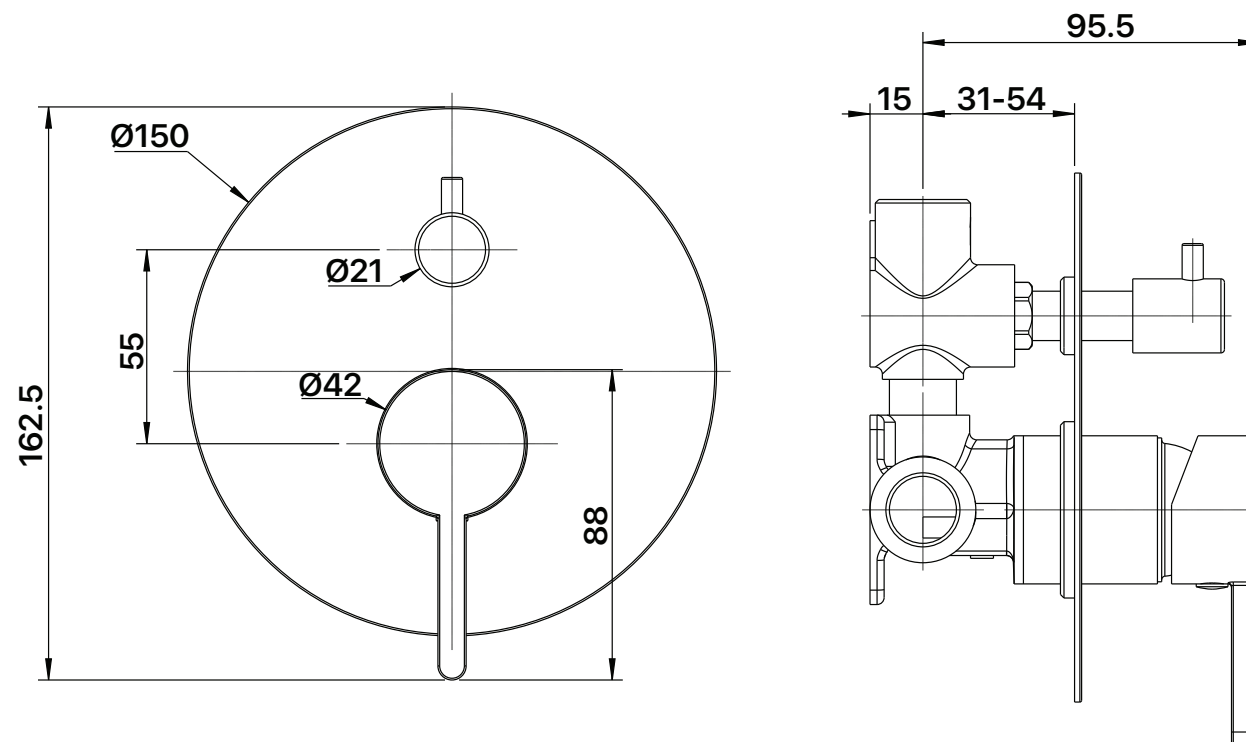
11SL974G

## FEATURES

- 35mm Ceramic Disc Cartridge
- 20 Year warranty
- 90 Deg rotating diverter switch
- 1500kPa Pressure rating

*the stylish choice*

# TECHNICAL DRAWING



## SHOWER DIVERTER MIXER

11SL974C | 11SL974M | 11SL974B | 11SL974CG