

# MIXXX

tapware & accessories

CATALOGUE 2022



**MIXERS  
TAPWARE  
SPOUTS  
SHOWERS  
ACCESSORIES  
TRAPS  
WASTES**



**PAGE 01**  
**ABOUT**  
**FINISHES**

**PAGE 02 - 05**  
**SINK MIXERS**  
KITCHEN COLLECTION

**PAGE 06 - 07**  
**SAFFRON**  
BATHROOM COLLECTION

**PAGE 08 - 09**  
**SAGE**  
BATHROOM COLLECTION

**PAGE 10 - 11**  
**ALOE**  
BATHROOM COLLECTION

**PAGE 12 - 13**  
**THYME**  
BATHROOM COLLECTION

**PAGE 14 - 15**  
**ANISE**  
BATHROOM COLLECTION

**PAGE 16 - 17**  
**BERRY**  
BATHROOM COLLECTION

**PAGE 18 - 19**  
**IRIS**  
BATHROOM COLLECTION

**PAGE 20 - 21**  
**COCOA**  
BATHROOM COLLECTION

**PAGE 22 - 23**  
**MAGNOLIA**  
BATHROOM COLLECTION

**PAGE 24 - 25**  
**CAYENNE**  
BATHROOM COLLECTION

**PAGE 26 - 27**  
**COCOA**  
3-PIECE TAPWARE

**PAGE 28 - 29**  
**SPRUCE**  
3-PIECE TAPWARE

**PAGE 30 - 31**  
**MATCHA**  
SPOUTS

**PAGE 32 - 33**  
**CHAI**  
SPOUTS

**PAGE 34 - 35**  
**MATCHA**  
SHOWERS

**PAGE 36 - 37**  
**CHAI**  
SHOWERS

**PAGE 38 - 39**  
**SANDALWOOD**  
BATHROOM ACCESSORIES

**PAGE 40 - 41**  
**CEDAR**  
BATHROOM ACCESSORIES

**PAGE 42 - 43**  
**CHIA**  
BATHROOM ACCESSORIES

**PAGE 44 - 45**  
**MINT**  
BATHROOM ACCESSORIES

**PAGE 46 - 47**  
**TRAPS, WASTES & GRATES**  
DRAINAGE

**PAGE 48 - 49**  
**ANISE CARE**  
COLLECTION

**PAGE 50 - 51**  
**CAYENNE CARE**  
COLLECTION

**PAGE 52 - 53**  
**EXTENDED**  
**WARRANTY INFORMATION**

# ABOUT



## IN PLUMBING SINCE 1967

Plumbing supply specialists since 1967, Brasshards has a well-earned reputation for providing top quality products and advice across residential, trade and commercial sectors.



## 100% AUSTRALIAN

A proudly family-owned and Australian-operated business, we've been supplying premium plumbing products to Australians for over fifty years.



YEAR WARRANTY

## 20-YEAR WARRANTY

Guaranteed peace of mind with up to 20 years of no-nonsense warranty coverage, backed by our Australian-based customer support team.



## EUROPEAN CARTRIDGES

Manufactured with high-quality European ceramic disc cartridges, Mixx tapware provides lasting smooth action and reliable functioning.



## IN-HOUSE PRODUCTION

Running our own manufacturing facility gives us total control of our product quality and supply chain, making us Australia's most reliable plumbing and bathroom supplier.



## SUSTAINABLY FOCUSED

We're proud to use both recycled brass and packaging, as we strive to reduce our environmental impact throughout the supply chain and focus on water-smart solutions.



## LEAK PROTECTION

Mixx basin and kitchen mixers offer superior leak protection with European SOFTPEX® tails. The robust connectors and hoses are burst-proof, anti-kink and corrosion-resistant.



## PRESSURE SAFE

All Mixx tapware boasts a 1,500kPa pressure rating. Three times the Australian Standard, our tapware is strong enough to withstand water pressure surges and fluctuations.



## LOCALLY DESIGNED

From the creatively bold to classically understated, our local and international designers work to create high-end collections of tapware, showers and accessories.



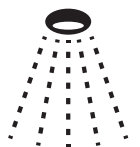
## LASTING FINISH

To ensure durability and long-lasting colour, Mixx tapware, showers and accessories feature High-quality PVD and electroplated finishes across collections.



## ULTRA-FIX MOUNTINGS

For ultra-secure fastening that won't loosen and detach over time, commercial-grade mountings with up to four fixings points are standard for all MIXX Accessories.



## EVEN SPRAY

Designed to 'mixx 'n' match' with any style and finish, Mixx showers provide both gently relaxing and invigorating sprays, while minimising water consumption.

# FINISHES

## PROTECTIVE

Essential for increasing tapware's resistance to wear and tear, PVD and electroplated finishes effectively withstand scratches without affecting the coat and colour.

## DURABLE

PVD and electroplated finishes are manufactured with a thin film for enhanced strength, shielding your tapware from abrasions and corrosion.

## SUSTAINABLE

A socially responsible process, with no hazardous materials, PVD and electroplated finishes are the environmentally-friendly choice for clean and dry tapware.

## CHROME

A metallic grey for both sophisticated and relaxed spaces, electroplated Chrome finish is a neutral finish that refreshes black, white and blue colours with a subtle shine.

## MATT BLACK

A classic and enduring shade, electroplated Matt Black refines monochromatic design schemes with distinct white and wood elements.

## GUN METAL

A charcoal tone for contemporary spaces with stripped back materials, Gun Metal PVD finish is a darker finish that's ideal for industrial designs with exposed brick and wood.

## BRUSHED NICKEL

A warm silver with a faint golden hue, Brushed Nickel electroplated finish is a fair shade ideally paired with off-white tones, marble benchtops and granite textures.

## BRUSHED BRASS

A contemporary spin on the widely-loved bronze and gold tones, Mixx's Brushed Brass PVD finish brings a radiating glow when paired with black fixtures or softer shades.



# SINK MIXER KITCHEN COLLECTION



CHROME

MATT  
BLACK

GUN  
METAL

BRUSHED  
NICKEL

BRUSHED  
BRASS



20 YEAR WARRANTY

Up to 20 years of no-nonsense warranty coverage



LASTING FINISH

High-quality PVD and electroplated finishes across collections



PRESSURE SAFE

1500kPa pressure rating three times the Australian Standard



SCAN HERE FOR DIMENSIONS AND ADDITIONAL INFORMATION ABOUT KITCHEN PRODUCTS



SOFTPEX® TAILS

Superior protection and corrosion resistance with European SOFTPEX® Tails



EUROPEAN CARTRIDGE

Designed with high-quality European ceramic disc cartridges



GERMAN CARTRIDGE

Designed with high-quality German ceramic disc cartridges





**CLOVE SINK MIXER**

WELS 5 Star/5Lpm  
11SL982CL - Chrome



**CORIANDER SINK MIXER**

WELS 5 Star/6Lpm  
11SL981CL - Chrome  
11SL981GL - Gun Metal  
11SL981BL - Brushed Nickel



**SAGE SINK MIXER**

WELS 5 Star/6Lpm  
11SL961CL - Chrome  
11SL961ML - Matt Black  
11SL961GL - Gun Metal  
11SL961BL - Brushed Nickel



**SAFFRON SINK MIXER**

WELS 6 Star/4Lpm  
11SL951CL - Chrome  
11SL951ML - Matt Black  
11SL951GL - Gun Metal  
11SL951BL - Brushed Nickel



**ALOE SINK MIXER\***

WELS 5 Star/5.5Lpm  
11SL971CL - Chrome  
11SL971ML - Matt Black  
11SL971GL - Gun Metal  
11SL971BL - Brushed Nickel



**THYME SINK MIXER\*\***

WELS 5 Star/5.5Lpm  
11SL161CL - Chrome  
11SL161ML - Matt Black



**THYME STRAIGHT SINK MIXER\*\***

WELS 4 Star/6.5Lpm  
11SL151CL - Chrome  
11SL151ML - Matt Black



**ANISE GOOSENECK SINK MIXER\*\***

WELS 5 Star/6Lpm  
11SL751CL - Chrome  
11SL751ML - Matt Black  
11SL751BL - Brushed Nickel  
11SL751RL - Brushed Brass



**ANISE ROUND GOOSENECK SINK MIXER\*\***

WELS 5 Star/5Lpm  
11SL757CL - Chrome  
11SL757ML - Matt Black  
11SL757BL - Brushed Nickel  
11SL757RL - Brushed Brass



\*Cold Start energy saving function, to reduce hot water wastage

\*\*German Cartridge

# SINK MIXER KITCHEN COLLECTION



CHROME



**20 YEAR WARRANTY**

Up to 20 years of no-nonsense warranty coverage



SCAN HERE FOR DIMENSIONS AND ADDITIONAL INFORMATION ABOUT KITCHEN PRODUCTS



**LASTING FINISH**

High-quality PVD and electroplated finishes across collections



**PRESSURE SAFE**

1500kPa pressure rating three times the Australian Standard



**SOFTPEX® TAILS**

Superior protection and corrosion resistance with European SOFTPEX® Tails



**BERRY SINK MIXER**

WELS 5 Star/6Lpm

11SL361CL - Chrome



**IRIS SINK MIXER**

WELS 5 Star/5Lpm

11SL351CL - Chrome



**COCOA GOOSENECK SINK MIXER**

WELS 6 Star/4.5Lpm

11SL651CL - Chrome



**COCOA SINK MIXER**

WELS 4 Star/7.5Lpm

11SL656CL - Chrome



**MAGNOLIA SINK MIXER**

WELS 5 Star/6Lpm

11SL051CL - Chrome



**MAGNOLIA GOOSENECK SINK MIXER**

WELS 4 Star/6.5Lpm

11SL056CL - Chrome



**CAYENNE SINK MIXER**

WELS 4 Star/7.5Lpm

7SL015EP - Chrome



**CAYENNE VEGIE SINK MIXER**

WELS 4 Star/7.5Lpm

7SL006CL - Chrome



# SAFFRON BATHROOM COLLECTION



CHROME

MATT  
BLACK

GUN  
METAL

BRUSHED  
NICKEL

BRUSHED  
BRASS



20 YEAR WARRANTY

Up to 20 years of no-nonsense warranty coverage



LASTING FINISH

High-quality PVD and electroplated finishes across collections

Understated and with a delicate charm, the Saffron collection comprises widely renowned additions to contemporary living spaces. Saffron mixers play with length and style to suit modern styles and intricate designs.



SCAN HERE FOR DIMENSIONS AND ADDITIONAL INFORMATION ABOUT SAFFRON PRODUCTS



PRESSURE SAFE

1500kPa pressure rating three times the Australian Standard



SOFTPEX® TAILS

Superior protection and corrosion resistance with European SOFTPEX® Tails



EUROPEAN CARTRIDGE

Designed with high-quality European ceramic disc cartridges



**BASIN MIXER**

**WELS 6 Star/4.5Lpm**

- 11SL950CL** - Chrome
- 11SL950ML** - Matt Black
- 11SL950GL** - Gun Metal
- 11SL950BL** - Brushed Nickel
- 11SL950RL** - Brushed Brass



**TOWER VESSEL MIXER**

**WELS 5 Star/5Lpm**

- 11SL953CL** - Chrome
- 11SL953ML** - Matt Black
- 11SL953GL** - Gun Metal
- 11SL953BL** - Brushed Nickel
- 11SL953RL** - Brushed Brass



**WALL PLATE MIXER**

**WELS 5 Star/5Lpm**

- 11SL955CL** - Chrome
- 11SL955ML** - Matt Black
- 11SL955GL** - Gun Metal
- 11SL955BL** - Brushed Nickel
- 11SL955RL** - Brushed Brass



**SHOWER | WALL MIXER\***

- 11SL952C** - Chrome
- 11SL952M** - Matt Black
- 11SL952G** - Gun Metal
- 11SL952B** - Brushed Nickel
- 11SL952R** - Brushed Brass



**SHOWER | WALL DIVERTER MIXER**

- 11SL954C** - Chrome
- 11SL954M** - Matt Black
- 11SL954G** - Gun Metal
- 11SL954B** - Brushed Nickel
- 11SL954R** - Brushed Brass



**BASIN SPOUT**

**WELS 4 Star/7.5Lpm**

- 11SL903CL** - Chrome
- 11SL903ML** - Matt Black
- 11SL903GL** - Gun Metal
- 11SL903BL** - Brushed Nickel
- 11SL903RL** - Brushed Brass

\*Available with smaller (60mm) backplate

# SAGE BATHROOM COLLECTION



CHROME

MATT  
BLACK

GUN  
METAL

BRUSHED  
NICKEL



20 YEAR WARRANTY

Up to 20 years of no-nonsense warranty coverage



LASTING FINISH

High-quality PVD and electroplated finishes across collections

With soft square angles, the Sage collection creates a sharp aesthetic for modern bathroom designs. Sage mixers are defined by strong edges, enhancing industrial styles with a contemporary flair.



SCAN HERE FOR DIMENSIONS AND ADDITIONAL INFORMATION ABOUT SAGE PRODUCTS



PRESSURE SAFE

1500kPa pressure rating three times the Australian Standard



SOFTPEX® TAILS

Superior protection and corrosion resistance with European SOFTPEX® Tails



EUROPEAN CARTRIDGE

Designed with high-quality European ceramic disc cartridges





**BASIN MIXER**

WELS 4 Star/7Lpm

- 11SL960CL - Chrome
- 11SL960ML - Matt Black
- 11SL960GL - Gun Metal
- 11SL960BL - Brushed Nickel



**TOWER VESSEL MIXER**

WELS 4 Star/6.5Lpm

- 11SL963CL - Chrome
- 11SL963ML - Matt Black
- 11SL963GL - Gun Metal
- 11SL963BL - Brushed Nickel



**WALL PLATE MIXER**

WELS 4 Star/7Lpm

- 11SL965CL - Chrome
- 11SL965ML - Matt Black
- 11SL965GL - Gun Metal
- 11SL965BL - Brushed Nickel



**SHOWER | WALL MIXER**

- 11SL962C - Chrome
- 11SL962M - Matt Black
- 11SL962G - Gun Metal
- 11SL962B - Brushed Nickel



**SHOWER | WALL DIVERTER MIXER**

- 11SL964C - Chrome
- 11SL964M - Matt Black
- 11SL964G - Gun Metal
- 11SL964B - Brushed Nickel



**BASIN SPOUT**

WELS 5 Star/6Lpm

- 11SL901CL - Chrome
- 11SL901ML - Matt Black
- 11SL901GL - Gun Metal
- 11SL901BL - Brushed Nickel



**BATH SPOUT**

- 11SL900C - Chrome
- 11SL900M - Matt Black
- 11SL900G - Gun Metal
- 11SL900B - Brushed Nickel

# ALOE BATHROOM COLLECTION



CHROME

MATT BLACK

GUN METAL

BRUSHED NICKEL

Modest with refined simplicity, the Aloe collection is renowned for its minimalist design that allows accompanying elements to shine. Aloe mixers bring a sophisticated look with high functionality, suiting a variety of contemporary living spaces.



SCAN HERE FOR DIMENSIONS AND ADDITIONAL INFORMATION ABOUT ALOE PRODUCTS



20 YEAR WARRANTY

Up to 20 years of no-nonsense warranty coverage



LASTING FINISH

High-quality PVD and electroplated finishes across collections



PRESSURE SAFE

1500kPa pressure rating three times the Australian Standard



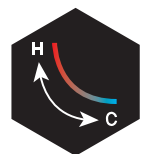
SOFTPEX® TAILS

Superior protection and corrosion resistance with European SOFTPEX® Tails



EUROPEAN CARTRIDGE

Designed with high-quality European ceramic disc cartridges



COLD START

Energy saving cartridge to reduce hot water wastage



**BASIN MIXER\***

**WELS 5 Star/5Lpm**

- 11SL970CL** - Chrome
- 11SL970ML** - Matt Black
- 11SL970GL** - Gun Metal
- 11SL970BL** - Brushed Nickel



**TOWER VESSEL MIXER\***

**WELS 5 Star/5.5Lpm**

- 11SL973CL** - Chrome
- 11SL973ML** - Matt Black
- 11SL973GL** - Gun Metal
- 11SL973BL** - Brushed Nickel



**WALL PLATE MIXER\***

**WELS 4 Star/7.5Lpm**

- 11SL975CL** - Chrome
- 11SL975ML** - Matt Black
- 11SL975GL** - Gun Metal
- 11SL975BL** - Brushed Nickel



**SHOWER | WALL MIXER**

- 11SL972C** - Chrome
- 11SL972M** - Matt Black
- 11SL972G** - Gun Metal
- 11SL972B** - Brushed Nickel



**SHOWER | WALL DIVERTER MIXER**

- 11SL974C** - Chrome
- 11SL974M** - Matt Black
- 11SL974G** - Gun Metal
- 11SL974B** - Brushed Nickel

\*Cold Start energy saving function, to reduce hot water wastage



# THYME BATHROOM COLLECTION



CHROME

MATT  
BLACK

With sharp edges, the Thyme collection is renowned for its square form. Thyme mixers subvert signature curves for a bold profile, designed as a statement piece for contemporary bathrooms.



SCAN HERE FOR DIMENSIONS AND ADDITIONAL INFORMATION ABOUT THYME PRODUCTS



20 YEAR WARRANTY

Up to 20 years of no-nonsense warranty coverage



LASTING FINISH

High-quality PVD and electroplated finishes across collections



PRESSURE SAFE

1500kPa pressure rating three times the Australian Standard



SOFTPEX® TAILS

Superior protection and corrosion resistance with European SOFTPEX® Tails



GERMAN CARTRIDGE

Designed with high-quality German ceramic disc cartridges



**BASIN MIXER**

WELS 5 Star/5.5Lpm

11SL160CL - Chrome

11SL160ML - Matt Black



**TOWER VESSEL MIXER**

WELS 5 Star/6Lpm

11SL167CL - Chrome

11SL167ML - Matt Black



**WALL PLATE MIXER\***

WELS 5 Star/5.5Lpm

11SL165CL - Chrome

11SL165ML - Matt Black



**SHOWER | WALL MIXER**

11SL162C - Chrome

11SL162M - Matt Black



**SHOWER | WALL DIVERTER MIXER**

11SL164C - Chrome

11SL164M - Matt Black

\*180mm Spout shown, also available in 210 and 250mm Spout options

# ANISE BATHROOM COLLECTION



CHROME

MATT  
BLACK

BRUSHED  
NICKEL

BRUSHED  
BRASS

A traditional pin profile, the Anise collection brings elegance to any living space. Anise mixers elevate contemporary bathrooms and kitchens with subtle accent colours to complement feature items and materials.



SCAN HERE FOR DIMENSIONS AND ADDITIONAL INFORMATION ABOUT ANISE PRODUCTS



20 YEAR WARRANTY

Up to 20 years of no-nonsense warranty coverage



LASTING FINISH

High-quality PVD and electroplated finishes across collections



PRESSURE SAFE

1500kPa pressure rating three times the Australian Standard



SOFTPEX® TAILS

Superior protection and corrosion resistance with European SOFTPEX® Tails



GERMAN CARTRIDGE

Designed with high-quality German ceramic disc cartridges





**CURVED SPOUT BASIN MIXER**

WELS 4 Star/6.5Lpm

- 11SL750CL - Chrome
- 11SL750ML - Matt Black
- 11SL750BL - Brushed Nickel
- 11SL750RL - Brushed Brass



**STRAIGHT SPOUT BASIN MIXER**

WELS 4 Star/7Lpm

- 11SL759CL - Chrome
- 11SL759ML - Matt Black
- 11SL759BL - Brushed Nickel
- 11SL759RL - Brushed Brass



**TOWER VESSEL BASIN MIXER**

WELS 5 Star/6Lpm

- 11SL753CL - Chrome
- 11SL753ML - Matt Black
- 11SL753BL - Brushed Nickel
- 11SL753RL - Brushed Brass



**WALL PLATE MIXER\***

WELS 4 Star/6.5Lpm

- 11SL755CL - Chrome
- 11SL755ML - Matt Black
- 11SL755BL - Brushed Nickel
- 11SL755RL - Brushed Brass



**SHOWER | WALL MIXER**

- 11SL752C - Chrome
- 11SL752M - Matt Black
- 11SL752B - Brushed Nickel
- 11SL752R - Brushed Brass



**SHOWER | WALL DIVERTER MIXER**

- 11SL754C - Chrome
- 11SL754M - Matt Black
- 11SL754B - Brushed Nickel
- 11SL754R - Brushed Brass



**WALL TUB MIXER**

- 11SL756C - Chrome
- 11SL756M - Matt Black
- 11SL756B - Brushed Nickel
- 11SL756R - Brushed Brass



**BASIN SPOUT\*\***

- WELS 3 Star/8.5Lpm
- 11SL701CL - Chrome
- 11SL701ML - Matt Black
- 11SL701RL - Brushed Brass



**BATH SPOUT\*\***

- 11SL700C - Chrome
- 11SL700M - Matt Black
- 11SL700R - Brushed Brass

\*180mm Spout shown, also available in 210 and 250mm Spout options

\*\*Also available in Gun Metal

# BERRY BATHROOM COLLECTION



CHROME



**20 YEAR WARRANTY**

Up to 20 years of no-nonsense warranty coverage

Polished and transcendent, the Berry collection glimmers against soft hues and neutral colour palettes to lift the feel of your bathroom. Berry mixers balance sharp edges with smooth finishes to refine your space.



SCAN HERE FOR DIMENSIONS AND ADDITIONAL INFORMATION ABOUT BERRY PRODUCTS



**LASTING FINISH**

High-quality PVD and electroplated finishes across collections



**PRESSURE SAFE**

1500kPa pressure rating three times the Australian Standard



**SOFTPEX® TAILS**

Superior protection and corrosion resistance with European SOFTPEX® Tails



**BASIN MIXER**

WELS 5 Star/6Lpm

11SL360CL - Chrome

---



**WALL PLATE MIXER**

WELS 5 Star/5Lpm

11SL365CL - Chrome

---



**SHOWER | WALL MIXER**

11SL362C - Chrome

---



**SHOWER | WALL DIVERTER MIXER**

11SL364C - Chrome

---

# IRIS BATHROOM COLLECTION



CHROME

Designed with a contoured profile, the Iris collection brings a classic style to luxurious bathrooms. Iris mixers convey lively opulence for sophisticated homes, lifting living spaces to their full potential.



SCAN HERE FOR DIMENSIONS AND ADDITIONAL INFORMATION ABOUT IRIS PRODUCTS



**20 YEAR WARRANTY**

Up to 20 years of no-nonsense warranty coverage



**LASTING FINISH**

High-quality PVD and electroplated finishes across collections



**PRESSURE SAFE**

1500kPa pressure rating three times the Australian Standard



**SOFTPEX® TAILS**

Superior protection and corrosion resistance with European SOFTPEX® Tails





**BASIN MIXER\***

**WELS 5 Star/5Lpm**

**11SL350CL - Chrome**



**WALL PLATE MIXER**

**WELS 5 Star/5.5Lpm**

**11SL355CL - Chrome**



**SHOWER | WALL MIXER**

**11SL352C - Chrome**

\*Stainless Steel PEX Tails

# COCOA BATHROOM COLLECTION



CHROME



**20 YEAR WARRANTY**

Up to 20 years of no-nonsense warranty coverage

With fresh versatility, the Cocoa collection effortlessly complements a vast range of styles. Cocoa mixers are designed with a subtle pin, connecting smaller details in design elements to unify living spaces.



SCAN HERE FOR DIMENSIONS AND ADDITIONAL INFORMATION ABOUT COCOA PRODUCTS



**LASTING FINISH**

High-quality PVD and electroplated finishes across collections



**PRESSURE SAFE**

1500kPa pressure rating three times the Australian Standard



**SOFTPEX® TAILS**

Superior protection and corrosion resistance with European SOFTPEX® Tails



**BASIN MIXER**

WELS 5 Star/6Lpm  
11SL650CL - Chrome

---



**TOWER VESSEL MIXER**

WELS 5 Star/6Lpm  
11SL653CL - Chrome

---



**WALL PLATE MIXER**

WELS 5 Star/5.5Lpm  
11SL655CL - Chrome

---



**SHOWER | WALL MIXER**

11SL652C - Chrome

---



**SHOWER | WALL DIVERTER MIXER**

11SL654C - Chrome

---

# MAGNOLIA BATHROOM COLLECTION



CHROME



**20 YEAR WARRANTY**

Up to 20 years of no-nonsense warranty coverage

Characterised by its evergreen namesake, the Magnolia collection is an eclectic range inspired by traditional and modern styles. Magnolia mixers complete living spaces with an inviting softness and subtly.



SCAN HERE FOR DIMENSIONS AND ADDITIONAL INFORMATION ABOUT MAGNOLIA PRODUCTS



**LASTING FINISH**  
High-quality PVD and electroplated finishes across collections



**PRESSURE SAFE**  
1500kPa pressure rating three times the Australian Standard



**SOFTPEX® TAILS**  
Superior protection and corrosion resistance with European SOFTPEX® Tails





**SWIVEL BASIN MIXER**

WELS 5 Star/6Lpm

11SL050CL - Chrome

---



**UPRIGHT BASIN MIXER**

WELS 4 Star/6.5Lpm

11SL057CL - Chrome

---



**FIXED BASIN MIXER**

WELS 3 Star/8Lpm

11SL053CL - Chrome

---



**WALL PLATE MIXER**

WELS 5 Star/5.5Lpm

11SL055CL - Chrome

---



**SHOWER | WALL MIXER**

11SL052C - Chrome

---



**SHOWER | WALL DIVERTER MIXER**

11SL054C - Chrome

---

# CAYENNE BATHROOM COLLECTION



CHROME



**20 YEAR WARRANTY**

Up to 20 years of no-nonsense warranty coverage

For timeless sophistication, the Cayenne collection introduces effortless practicality into your home with a smooth aesthetic to brighten up your living space. Cayenne mixers feature round curves that blend seamlessly into contemporary kitchens and bathrooms.



SCAN HERE FOR DIMENSIONS AND ADDITIONAL INFORMATION ABOUT CAYENNE PRODUCTS



**LASTING FINISH**  
High-quality PVD and electroplated finishes across collections



**PRESSURE SAFE**  
1500kPa pressure rating three times the Australian Standard



**SOFTPEX® TAILS**  
Superior protection and corrosion resistance with European SOFTPEX® Tails



**SWIVEL BASIN MIXER**

WELS 5 Star/5.5Lpm

7SL003EP - Chrome



**FIXED BASIN MIXER**

WELS 3 Star/8Lpm

7SL005EP - Chrome



**SHOWER | WALL MIXER**

7SL004C - Chrome

# COCOA

## 3-PIECE TAPWARE



With fresh versatility, the Cocoa collection effortlessly complements a vast range of styles. Cocoa tapware is designed with cross or lever handle options, providing a fresh aesthetic to traditional bathroom spaces.



SCAN HERE FOR DIMENSIONS AND ADDITIONAL INFORMATION ABOUT COCOA PRODUCTS



CHROME



20 YEAR WARRANTY

Up to 20 years of no-nonsense warranty coverage



LASTING FINISH

High-quality PVD and electroplated finishes across collections





**BASIN SET CROSS HANDLE**

WELS 4 Star/7Lpm

**11SL670C** - Chrome

---



**WALL STOPS CROSS HANDLE**

**11SL671C** - Chrome

---



**WASHING MACHINE SET CROSS HANDLE**

**11SL672C** - Chrome

---



**BASIN SET LEVER HANDLE**

WELS 4 Star/7Lpm

**11SL660C** - Chrome

---



**WALL STOPS LEVER HANDLE**

**11SL661C** - Chrome

---



**WASHING MACHINE SET LEVER HANDLE**

**11SL662C** - Chrome

---

# SPRUCE 3-PIECE TAPWARE



Petite and practical, the Spruce collection pairs basin and wall sets to enhance the user experience. Spruce balances the functional with the aesthetic, easily refining bathroom and laundry designs.



SCAN HERE FOR DIMENSIONS AND ADDITIONAL INFORMATION ABOUT SPRUCE PRODUCTS



CHROME



20 YEAR WARRANTY

Up to 20 years of no-nonsense warranty coverage



LASTING FINISH

High-quality PVD and electroplated finishes across collections



**BASIN SET**

WELS 4 Star/7Lpm

11SL550CL - Chrome

---



**SHOWER SET**

WELS 3 Star/8Lpm

11SL552CL - Chrome

---



**BATH SET**

11SL551C - Chrome

---



**WALL STOPS**

11SL555C - Chrome

---



**WASHING MACHINE SET**

11SL556C - Chrome

---

# MATCHA SPOUTS



CHROME

MATT  
BLACK

GUN  
METAL

BRUSHED  
NICKEL

BRUSHED  
BRASS

Designed with spherical edges and muted sensibility, the Matcha collection is defined by soft curves and strict angles. Matcha spouts are ideally paired with similarly curved tapware and accessories, unifying bathroom designs.



SCAN HERE FOR DIMENSIONS AND ADDITIONAL INFORMATION ABOUT MATCHA PRODUCTS



**10 YEAR WARRANTY**

Up to 10 years of no-nonsense warranty coverage



**LASTING FINISH**

High-quality PVD and electroplated finishes across collections





**FLOOR MOUNTED BATH SPOUT**

- 11FR001C** - Chrome
- 11FR001M** - Matt Black
- 11FR001B** - Brushed Nickel
- 11FR001R** - Brushed Brass



**FLOOR MOUNTED BATH FILLER\***

- 11FBR001C** - Chrome
- 11FBR001M** - Matt Black
- 11FBR001G** - Gun Metal
- 11FBR001B** - Brushed Nickel
- 11FBR001R** - Brushed Brass



**200MM BATH SPOUT**

- 11RSP02C** - Chrome
- 11RSP02M** - Matt Black
- 11RSP02G** - Gun Metal
- 11RSP02B** - Brushed Nickel
- 11RSP02R** - Brushed Brass



**300MM BATH SPOUT**

- 11RSP03C** - Chrome
- 11RSP03M** - Matt Black



**SWIVEL BATH SPOUT**

- 11RSP04C** - Chrome
- 11RSP04M** - Matt Black
- 11RSP04G** - Gun Metal
- 11RSP04B** - Brushed Nickel
- 11RSP04R** - Brushed Brass



**UNIVERSAL BATH DIVERTER SPOUT**

- 1BS780C** - Chrome

\*Bath filler with Hand Shower available in Brushed Brass - 11FHR001R and Chrome - 11FHR001C

# CHAI SPOUTS



CHROME

MATT  
BLACK

GUN  
METAL

BRUSHED  
NICKEL

With a diverse look, the Chai collection strengthens simple designs with a minimalist touch. Chai spouts delicately reimagine intricate features, bringing a less-is-more philosophy to bathroom interiors.



SCAN HERE FOR DIMENSIONS AND ADDITIONAL INFORMATION ABOUT CHAI PRODUCTS



**10 YEAR WARRANTY**

Up to 10 years of no-nonsense warranty coverage



**LASTING FINISH**

High-quality PVD and electroplated finishes across collections



**FLOOR MOUNTED BATH SPOUT**

- 11FS001C** - Chrome
  - 11FS001M** - Matt Black
  - 11FS001B** - Brushed Nickel
- 



**200MM BATH SPOUT**

- 11SSP01C** - Chrome
  - 11SSP01M** - Matt Black
  - 11SSP01G** - Gun Metal
  - 11SSP01B** - Brushed Nickel
- 



**300MM BATH SPOUT**

- 11SSP02C** - Chrome
  - 11SSP02M** - Matt Black
- 



**SWIVEL BATH SPOUT**

- 11SSP04C** - Chrome
  - 11SSP04M** - Matt Black
  - 11SSP04G** - Gun Metal
  - 11SSP04B** - Brushed Nickel
-

# MATCHA SHOWERS



CHROME

MATT BLACK

GUN METAL

BRUSHED NICKEL

BRUSHED BRASS

Designed with spherical edges and muted sensibility, the Matcha collection is defined by soft curves and strict angles. Matcha showers are ideally paired with similarly curved tapware and accessories, unifying bathroom designs.



SCAN HERE FOR DIMENSIONS AND ADDITIONAL INFORMATION ABOUT MATCHA PRODUCTS



10 YEAR WARRANTY

Up to 10 years of no-nonsense warranty coverage



LASTING FINISH

High-quality PVD and electroplated finishes across collections



RAIN SPRAY

Gentle full spray for a relaxing showering experience.



MASSAGE SPRAY

Firm, pulsating action to invigorate and massage.



COMBO SPRAY

Perfect mix for a full and firm spray pattern.





**RETRO TWIN SHOWER**

WELS 3 Star/8.5Lpm  
**11RSS01CL** - Chrome



**TWIN SHOWER\***

WELS 3 Star/8Lpm  
**11RSL02CL** - Chrome  
**11RSL02ML** - Matt Black  
**11RSL02GL** - Gun Metal  
**11RSL02BL** - Brushed Nickel  
**11RSL02RL** - Brushed Brass



**RAIL SHOWER**

WELS 4 Star/7.5Lpm  
**11RHS02CL** - Chrome  
**11RHS03ML** - Matt Black  
**11RHS03GL** - Gun Metal  
**11RHS03BL** - Brushed Nickel  
**11RHS03RL** - Brushed Brass



**3 SPRAY HANDSHOWER KIT\*\***

WELS 4 Star/7Lpm  
**15HS703CL** - Chrome  
**15HS703ML** - Matt Black



**ABS SHOWER HEAD\*\*\***

WELS 3 Star/8.5Lpm  
**11RSH02CL** - Chrome  
**11RSH02ML** - Matt Black  
**11RSH02GL** - Gun Metal  
**11RSH02BL** - Brushed Nickel  
**11RSH02RL** - Brushed Brass



**380MM STRAIGHT SHOWER ARM**

**11RSA01C** - Chrome  
**11RSA01M** - Matt Black  
**11RSA01G** - Gun Metal  
**11RSA01B** - Brushed Nickel  
**11RSA01R** - Brushed Brass



**HIGH RISE SHOWER ARM**

**11RSA02C** - Chrome  
**11RSA02M** - Matt Black  
**11RSA02G** - Gun Metal  
**11RSA02B** - Brushed Nickel  
**11RSA02R** - Brushed Brass



**300MM STRAIGHT CEILING DROPPER**

**11RSD01C** - Chrome  
**11RSD01M** - Matt Black  
**11RSD01G** - Gun Metal  
**11RSD01B** - Brushed Nickel  
**11RSD01R** - Brushed Brass



**450MM STRAIGHT CEILING DROPPER**

**11RSD02C** - Chrome  
**11RSD02M** - Matt Black  
**11RSD02G** - Gun Metal  
**11RSD02B** - Brushed Nickel

\*Deluxe Twin Shower with slimline Brass Shower Head also available in Chrome - 11RSL01CL

\*\*Single Spray Handshower Kit also available in Chrome - 15HS701CL

\*\*\*Slimline Brass Shower head also available in Chrome - 11RSH04CL

# CHAI SHOWERS



CHROME

MATT BLACK

GUN METAL

BRUSHED NICKEL

With a diverse look, the Chai collection strengthens simple designs with a minimalist touch. Chai showers delicately reimagine intricate features, bringing a less-is-more philosophy to bathroom interiors.



SCAN HERE FOR DIMENSIONS AND ADDITIONAL INFORMATION ABOUT CHAI PRODUCTS



10 YEAR WARRANTY

Up to 10 years of no-nonsense warranty coverage



LASTING FINISH

High-quality PVD and electroplated finishes across collections



RAIN SPRAY

Gentle full spray for a relaxing showering experience.



COMBO SPRAY

Perfect mix for a full and firm spray pattern.



MASSAGE SPRAY

Firm, pulsating action to invigorate and massage.



**RETRO TWIN SHOWER**

WELS 3 Star/8Lpm  
11SSS01CL - Chrome



**TWIN SHOWER\***

WELS 3 Star/8Lpm  
11SSL02CL - Chrome  
11SSL02ML - Matt Black  
11SSL02GL - Gun Metal  
11SSL02BL - Brushed Nickel



**RAIL SHOWER**

WELS 4 Star/7.5Lpm  
11SHS01CL - Chrome  
11SHS02ML - Matt Black  
11SHS02GL - Gun Metal  
11SHS02BL - Brushed Nickel



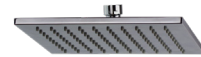
**3 SPRAY HANDSHOWER KIT**

WELS 4 Star/7Lpm  
15HS960CL - Chrome  
15HS960ML - Matt Black



**ABS SHOWER HEAD**

WELS 3 Star8.5Lpm  
11SSH01CL - Chrome  
11SSH01ML - Matt Black  
11SSH01GL - Gun Metal  
11SSH01BL - Brushed Nickel



**BRASS SHOWER HEAD**

WELS 3 Star8Lpm  
11SSH03CL - Chrome



**380MM STRAIGHT SHOWER ARM**

11SSA01C - Chrome  
11SSA01M - Matt Black  
11SSA01G - Gun Metal  
11SSA01B - Brushed Nickel



**HIGH RISE SHOWER ARM**

11SSA02C - Chrome  
11SSA02M - Matt Black  
11SSA02G - Gun Metal  
11SSA02B - Brushed Nickel



**300MM CEILING DROPPER ARM\*\***

11SSD01C - Chrome  
11SSD01M - Matt Black  
11SSD01G - Gun Metal  
11SSD01B - Brushed Nickel

\*Deluxe Twin Shower with slimline Brass Shower Head also available in Chrome - 11SSL01CL

\*\* Extended 450mm version also available in Chrome - 11SSD02C

# SANDALWOOD BATHROOM ACCESSORIES



CHROME

MATT  
BLACK

GUN  
METAL

BRUSHED  
NICKEL

A uniquely sharp design, the Sandalwood collection complements living spaces with softer compositions. Sandalwood accessories electrify bathrooms with bold shapes, ideal for accompanying elegantly spheric mixers.



SCAN HERE FOR DIMENSIONS AND ADDITIONAL INFORMATION ABOUT SANDALWOOD PRODUCTS



10 YEAR WARRANTY

Up to 10 years of no-nonsense warranty coverage



LASTING FINISH

High-quality PVD and electroplated finishes across collections



ULTRA-FIX MOUNTINGS

Commercial grade mountings with up to four fixings points





**600 SINGLE TOWEL RAIL**

- 13SA205C** - Chrome
- 13SA205M** - Matt Black
- 13SA205G** - Gun Metal
- 13SA205B** - Brushed Nickel



**800 SINGLE TOWEL RAIL**

- 13SA204C** - Chrome
- 13SA204M** - Matt Black
- 13SA204G** - Gun Metal
- 13SA204B** - Brushed Nickel



**600 DOUBLE TOWEL RAIL**

- 13SA208C** - Chrome
- 13SA208M** - Matt Black
- 13SA208G** - Gun Metal
- 13SA208B** - Brushed Nickel



**800 DOUBLE TOWEL RAIL**

- 13SA206C** - Chrome
- 13SA206M** - Matt Black
- 13SA206G** - Gun Metal
- 13SA206B** - Brushed Nickel



**HAND TOWEL HOLDER**

- 13SA203C** - Chrome
- 13SA203M** - Matt Black
- 13SA203G** - Gun Metal
- 13SA203B** - Brushed Nickel



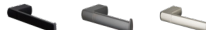
**SHOWER SHELF**

- 13SA209C** - Chrome
- 13SA209M** - Matt Black
- 13SA209G** - Gun Metal
- 13SA209B** - Brushed Nickel



**SOAP DISH**

- 13SA207C** - Chrome
- 13SA207M** - Matt Black
- 13SA207G** - Gun Metal
- 13SA207B** - Brushed Nickel



**TOILET ROLL HOLDER**

- 13SA202C** - Chrome
- 13SA202M** - Matt Black
- 13SA202G** - Gun Metal
- 13SA202B** - Brushed Nickel



**ROBE HOOK**

- 13SA201C** - Chrome
- 13SA201M** - Matt Black
- 13SA201G** - Gun Metal
- 13SA201B** - Brushed Nickel

# CEDAR BATHROOM ACCESSORIES



CHROME

With the charm of an enduring artistic vision, the Cedar collection pairs simplicity with lasting elegance. Cedar draws out the subtle details of your bathroom while enhancing the functionality of your accessories.



SCAN HERE FOR DIMENSIONS AND ADDITIONAL INFORMATION ABOUT CEDAR PRODUCTS



**10 YEAR WARRANTY**

Up to 10 years of no-nonsense warranty coverage



**LASTING FINISH**

High-quality PVD and electroplated finishes across collections



**ULTRA-FIX MOUNTINGS**

Commercial grade mountings with up to four fixings points



**600 SINGLE TOWEL RAIL**

**13ZSR600** - Chrome

---



**600 DOUBLE TOWEL RAIL**

**13ZDR600** - Chrome

---



**TOWEL RING**

**13ZTR002** - Chrome

---



**450MM GLASS SHELF**

**13ZSH004** - Chrome

---



**TOILET ROLL HOLDER**

**13ZTH001** - Chrome

---

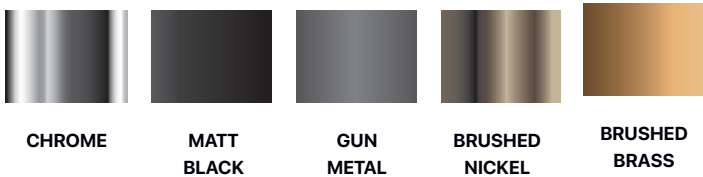


**ROBE HOOK**

**13ZRH003** - Chrome

---

# CHIA BATHROOM ACCESSORIES



With a diverse look, the Chia collection strengthens simple designs with a minimalist touch. Chia accessories delicately reimagine intricate features, bringing a less-is-more philosophy to bathroom interiors.



SCAN HERE FOR DIMENSIONS AND ADDITIONAL INFORMATION ABOUT CHIA PRODUCTS



**10 YEAR WARRANTY**

Up to 10 years of no-nonsense warranty coverage



**LASTING FINISH**

High-quality PVD and electroplated finishes across collections



**ULTRA-FIX MOUNTINGS**

Commercial grade mountings with up to four fixings points





**750MM SINGLE TOWEL RAIL**

- 13RSR01C** - Chrome
- 13RSR01M** - Matt Black
- 13RSR01G** - Gun Metal
- 13RSR01B** - Brushed Nickel
- 13RSR01R** - Brushed Brass



**750MM DOUBLE TOWEL RAIL**

- 13RDR01C** - Chrome
- 13RDR01M** - Matt Black
- 13RDR01G** - Gun Metal
- 13RDR01B** - Brushed Nickel
- 13RDR01R** - Brushed Brass



**TOWEL RING**

- 13RTR01C** - Chrome
- 13RTR01M** - Matt Black
- 13RTR01G** - Gun Metal
- 13RTR01B** - Brushed Nickel
- 13RTR01R** - Brushed Brass



**450MM GLASS SHELF**

- 13RGS01C** - Chrome
- 13RGS01M** - Matt Black
- 13RGS01G** - Gun Metal
- 13RGS01B** - Brushed Nickel
- 13RGS01R** - Brushed Brass



**SOAP BASKET**

- 13RSB01C** - Chrome
- 13RSB01M** - Matt Black
- 13RSB01G** - Gun Metal
- 13RSB01B** - Brushed Nickel
- 13RSB01R** - Brushed Brass



**TOILET ROLL HOLDER**

- 13RTH01C** - Chrome
- 13RTH01M** - Matt Black
- 13RTH01G** - Gun Metal
- 13RTH01B** - Brushed Nickel
- 13RTH01R** - Brushed Brass



**ROBE HOLDER**

- 13RRH01C** - Chrome
- 13RRH01M** - Matt Black
- 13RRH01G** - Gun Metal
- 13RRH01B** - Brushed Nickel
- 13RRH01R** - Brushed Brass

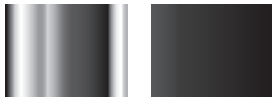


**DOUBLE CORNER BASKET**

- 13BS001** - Chrome



# MINT BATHROOM ACCESSORIES



CHROME

MATT  
BLACK

A striking companion to bathroom mixers, the Mint collection is perfect for adventurous living spaces. Mint accessories strive for refined elegance, allowing feature pieces to shine in bathroom designs.



SCAN HERE FOR DIMENSIONS AND ADDITIONAL INFORMATION ABOUT MINT PRODUCTS



### 10 YEAR WARRANTY

Up to 10 years of no-nonsense warranty coverage



### LASTING FINISH

High-quality PVD and electroplated finishes across collections



### ULTRA-FIX MOUNTINGS

Commercial grade mountings with up to four fixings points



**750MM SINGLE TOWEL RAIL\***

**13SSR01C** - Chrome  
**13SSR01M** - Matt Black



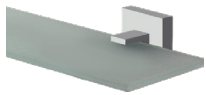
**750MM DOUBLE TOWEL RAIL\***

**13SDR01C** - Chrome  
**13SDR01M** - Matt Black



**TOWEL RING**

**13STR01C** - Chrome  
**13STR01M** - Matt Black



**450MM GLASS SHELF**

**13SGS01C** - Chrome  
**13SGS01M** - Matt Black



**SOAP BASKET**

**13SSB01C** - Chrome  
**13SSB01M** - Matt Black



**TOILET ROLL HOLDER**

**13STH01C** - Chrome  
**13STH01M** - Matt Black



**ROBE HOLDER**

**13SRH01C** - Chrome  
**13SRH01M** - Matt Black

\*Rails can be cut to size

# MIXX BOTTLE TRAPS WASTES FLOOR GRATES



CHROME

MATT  
BLACK

GUN  
METAL

BRUSHED  
NICKEL

BRUSHED  
BRASS

Our range of bottle traps suit a 32/40mm waste and feature extended inlets and adjustable height and reach. With a wide range of basin wastes and grates, there is sure to be something to suit your project.



SCAN HERE FOR DIMENSIONS AND ADDITIONAL INFORMATION ABOUT BOTTLE TRAPS



**2 YEAR WARRANTY**

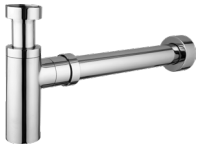
Up to 2 years of no-nonsense warranty coverage



**LASTING FINISH**

High-quality PVD and electroplated finishes across collections





**ROUND BRASS BOTTLE TRAP**

- 9BTR01C** - Chrome
- 9BTR01M** - Matt Black
- 9BTR01G** - Gun Metal
- 9BTR01B** - Brushed Nickel
- 9BTR01R** - Brushed Brass



**SQUARE BRASS BOTTLE TRAP**

- 9BTS01C** - Chrome
- 9BTS01M** - Matt Black



**UNIVERSAL POP UP WASTE**

- 9WA041C** - Chrome
- 9WA041M** - Matt Black
- 9WA041B** - Brushed Nickel



**UNIVERSAL DOME POP UP WASTE**

- 9WA042C** - Chrome
- 9WA042M** - Matt Black
- 9WA042G** - Gun Metal
- 9WA042B** - Brushed Nickel
- 9WA042R** - Brushed Brass



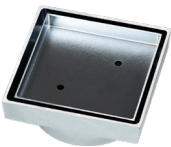
**POP UP WASTE\***

- 9WA010C** - Chrome



**DOME STYLE POP UP WASTE\***

- 9WA035C** - Chrome
- 9WA035M** - Matt Black



**100MM BRASS TILE GRATE**

- 6GR041C** - Chrome
- 6GR041M** - Matt Black
- 6GR041G** - Gun Metal
- 6GR041B** - Brushed Nickel



**100MM STAINLESS STEEL TILE GRATE**

- 6GR040C** - Stainless Steel

\*Available in: 32mm | 32mm Overflow | 32mm Overflow & 40mm Adapter | 40mm | 40mm Overflow

# ANISE CARE COLLECTION



CHROME

MATT  
BLACK

The Anise Care Range is ideal for public washrooms, home independent living solutions and aged and disability care applications.



SCAN HERE FOR DIMENSIONS AND ADDITIONAL INFORMATION ABOUT CARE PRODUCTS



20 YEAR WARRANTY

Up to 20 years of no-nonsense warranty coverage



LASTING FINISH

High-quality PVD and electroplated finishes across collections



PRESSURE SAFE

1500kPa pressure rating three times the Australian Standard



SOFTPEX® TAILS

Superior protection and corrosion resistance with European SOFTPEX® Tails



GERMAN CARTRIDGE

Designed with high-quality German ceramic disc cartridges



**GOOSENECK SINK MIXER**

**WELS 5 Star/6Lpm**

**11SL751CD** - Chrome

**11SL751MD** - Matt Black



**CURVED SPOUT BASIN MIXER**

**WELS 4 Star/6.5Lpm**

**11SL750CD** - Chrome

**11SL750MD** - Matt Black



**STRAIGHT SPOUT BASIN MIXER**

**WELS 4 Star/7Lpm**

**11SL759CD** - Chrome



**TOWER VESSEL MIXER**

**WELS 5 Star/6Lpm**

**11SL753CD** - Chrome

**11SL753MD** - Matt Black



**WALL PLATE MIXER**

**WELS 4 Star/6.5Lpm**

**11SL755CD** - Chrome

**11SL755MD** - Matt Black



**WALL TUB MIXER**

**11SL756CD** - Chrome

# CAYENNE CARE COLLECTION



CHROME



**20 YEAR WARRANTY**

Up to 20 years of no-nonsense warranty coverage

The Cayenne Care Range is ideal for public washrooms, home independent living solutions and aged and disability care applications.



SCAN HERE FOR DIMENSIONS AND ADDITIONAL INFORMATION ABOUT CARE PRODUCTS



**LASTING FINISH**

High-quality PVD and electroplated finishes across collections



**PRESSURE SAFE**

1500kPa pressure rating three times the Australian Standard



**SOFTPEX® TAILS**

Superior protection and corrosion resistance with European SOFTPEX® Tails





**SINK MIXER**

**WELS 4 Star/7.5Lpm**

**7SL015CD - Chrome**

---



**SWIVEL BASIN MIXER**

**7SL003CD - Chrome**

---



**FIXED BASIN MIXER**

**7SL005CD - Chrome**

---

# EXTENDED WARRANTY INFORMATION



SCAN HERE FOR MORE  
INFORMATION ABOUT MIXX

- Residential warranty applies only to products installed in a residential home. Commercial warranty applies only to products not installed in a residential home.
- This includes but is not limited to hotels, motels, schools, hospitals, universities, aged care facilities, factories, restaurants and commercial kitchens.



**20 YEAR WARRANTY**

Up to 20 years of no-nonsense warranty coverage on tapware

**10 YEAR WARRANTY**

Up to 10 years of no-nonsense warranty coverage on showers, spouts and accessories

**2 YEAR WARRANTY**

Up to 2 years of no-nonsense warranty coverage on traps, wastes and grates

- The extended warranty across our collections reflects our commitment to premium and long-lasting tapware. Dedicated to ongoing high-quality service, our Australian-based support team is here to provide after-sales care to our valued customers.
- Mixx products are designed for peace of mind – for both residential homes and commercial property installation. With our warranty period applying from the date of purchase, Mixx tapware and accessories are guaranteed to be free of faults or flaws in materials and manufacture.

PRODUCT	RESIDENTIAL WARRANTY	COMMERCIAL WARRANTY
MIXERS & TAPWARE	<ul style="list-style-type: none"> <li>• <b>20 years replacement for product or parts</b></li> <li>• 5 years parts, labour and finish</li> </ul>	<ul style="list-style-type: none"> <li>• <b>20 years replacement for product or parts</b></li> <li>• 1 year parts, labour and finish</li> </ul>
SHOWERS & SPOUTS	<ul style="list-style-type: none"> <li>• <b>10 years replacement for product or parts</b></li> <li>• 5 years finish and hose replacement</li> </ul>	<ul style="list-style-type: none"> <li>• <b>10 years replacement for product or parts</b></li> <li>• 1 year finish and hose replacement</li> </ul>
ACCESSORIES	<ul style="list-style-type: none"> <li>• <b>10 years replacement for product or parts</b></li> <li>• 5 years finish</li> </ul>	<ul style="list-style-type: none"> <li>• <b>10 years replacement for product or parts</b></li> <li>• 1 year finish</li> </ul>
WASTES, BOTTLE TRAPS & GRATES	<ul style="list-style-type: none"> <li>• <b>2 years replacement product or parts</b></li> <li>• 1 year finish</li> </ul>	<ul style="list-style-type: none"> <li>• <b>1 year replacement product or parts</b></li> <li>• 1 year finish</li> </ul>

**WARRANTY INFORMATION**

Our warranty period commences from the date of purchase to the day the warranty claim is presented to Brasshards Group. The product's warranty applies to the original owner only and cannot be transferred.

Brasshards Group will dictate the nature of warranty repair or replacement work and all warranty work must be approved by Brasshards Group before commencement. Brasshards Group will not be liable for any claims on labour or parts that were not approved in advance by Brasshards Group.

For quality reassurance, our goods come with guarantees that cannot be excluded under the Australian Consumer Law. You are entitled to a replacement or refund for a major failure and compensation for any other reasonably foreseeable loss or damage. You are also entitled to have the goods repaired or replaced if the goods fail to be of acceptable quality and the failure does not amount to a major failure.

**WARRANTY MAY BE VOIDED FOR THE FOLLOWING REASONS:**

- Use of abrasive or acid-based cleaners
- Failure to provide proof of purchase
- Failure to comply with National or State standards during installation or use
- Failure to follow installation instructions
- Fitting of non-approved products, such as aerators or flow regulators
- Products used in applications other than intended
- Products installed by an unlicensed installer (where applicable)
- Products exposed to adverse environmental elements
- Failure to properly clean or maintain the product
- Warranty work commenced without approval from Brasshards
- Damage as a result of installation or post-installation use

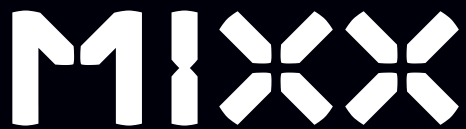
**MAKING A CLAIM**

1. Ensure that you have carefully read the Installation Instructions.
2. Contact your installer. Most issues are due to water lines not being flushed adequately before installation or fittings not being tightened correctly.
3. Locate your proof of purchase before contacting Brasshards on 07 3326 5950 or service@brasshards.com.au for further troubleshooting solutions or to arrange a service call.

**PRODUCT CLEANING AND CARE**

These care instructions apply to all colours and finishes on products manufactured by Brasshards Group:

- Do not install tapware using acetone silicones.
- Do not use harsh detergents, abrasive cleaners (including cream cleansers), or cleaning agents containing hydrochloric acid, formic acid, chlorine bleach, citric acid or acetic acid. These can cause significant damage.
- Do not use wax-based furniture cream, as these can result in a buildup of deposits that detract from the appearance of your tapware.
- Do not use unnecessary pressure. Wipe in one direction only. Not only can robust cleaning methods and aggressive cleaning agents damage surfaces, but they can also affect the inner workings of the product.
- Take special care when combating limescale and dirt. If inappropriate handling leads to damage, this is not covered by the warranty.
- Where your tapware remains dry in use, use a soft cloth to remove surface dust. If your tapware requires further cleaning, use a soft microfibre cloth in warm soapy water. This is especially important for electroplated tapware, to maintain the finish.
- If you are unsure about your cleaner, and/or it contains chemicals you cannot identify, avoid using it on your product.



tapware & accessories

PO Box 374, Virginia BC Q 4014  
63 Yarraman Place, Virginia Q 4014

P 07 3326 5900  
F 07 3326 5905

[info@mixxtapware.com.au](mailto:info@mixxtapware.com.au)  
[mixxtapware.com.au](http://mixxtapware.com.au)

A BRAND BY  
**BRASSHARDS**  
— GROUP —

